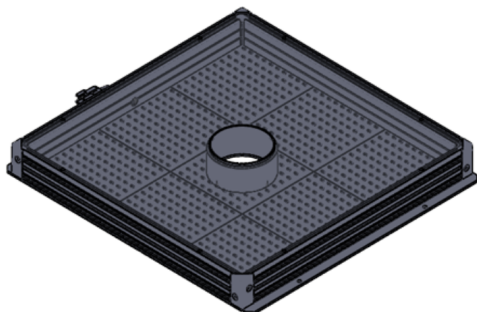


LTPVZE240X240D50-X-G-24V

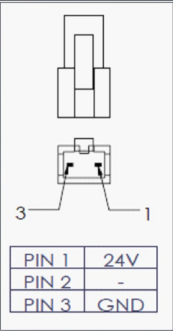
Technical drawing of the front view of the device. The drawing shows a square emitting area with a central circular hole. Dimensions include overall width of 276, emitting area width of 240, and a central hole diameter of 50. Mounting holes are specified as 4x Ø3.2 THRU. A connector for a 50cm cable is shown on the left. A side view at the bottom shows a height of 30 and a mounting bracket with 2 screws.



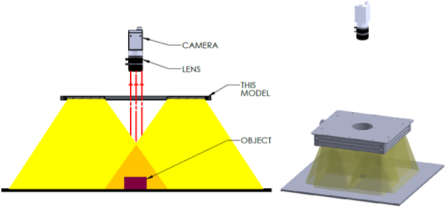
Casing Material	Aluminium
Storage Temperature Range	0 - 45°C
Storage Humidity Range	20 - 85%
Weight	-g
Width / Inner Diameter	258mm
Length / Outer Diameter	276mm
Height / Thickness	30mm

ILLUMINATOR DATA

LTPVZE240X240D50-X-G-24V

Connection Information			
Connector Type	JST SMR-03V-B		
Cable Length	500mm		
Pin Configuration	Pin	Signal	Cable Color
	1	24V	RED
	2	-	-
	3	GND	WHITE / BLACK
			

Additional Information	
Additional Cooling Method	Attached to machine part for better heat dissipation
Intensity Controller Selection	LTIC series
CE Conformity	YES
RoHS Compliance	YES

Application	
Illumination Type	High Intensity Diffused Front Light
Application Use	<ul style="list-style-type: none"> • Robotic Picking • Identification of Missing Part • Dimensions Measurements • Shape Recognition 

ILLUMINATOR DATA

LTPVZE240X240D50-X-G-24V

Lighting Pattern				
Working Distance	For further details, please contact us			
Display and Image	For further details, please contact us			
Data Results	Horizontal	Meas. (mm)	Vertical	Meas. (mm)
	90%	N.A.	90%	N.A.
	90%	N.A.	90%	N.A.
	80%	N.A.	80%	N.A.
	70%	N.A.	70%	N.A.
	60%	N.A.	60%	N.A.
	50%	N.A.	50%	N.A.
	40%	N.A.	40%	N.A.
	30%	N.A.	30%	N.A.
	20%	N.A.	20%	N.A.
	10%	N.A.	10%	N.A.